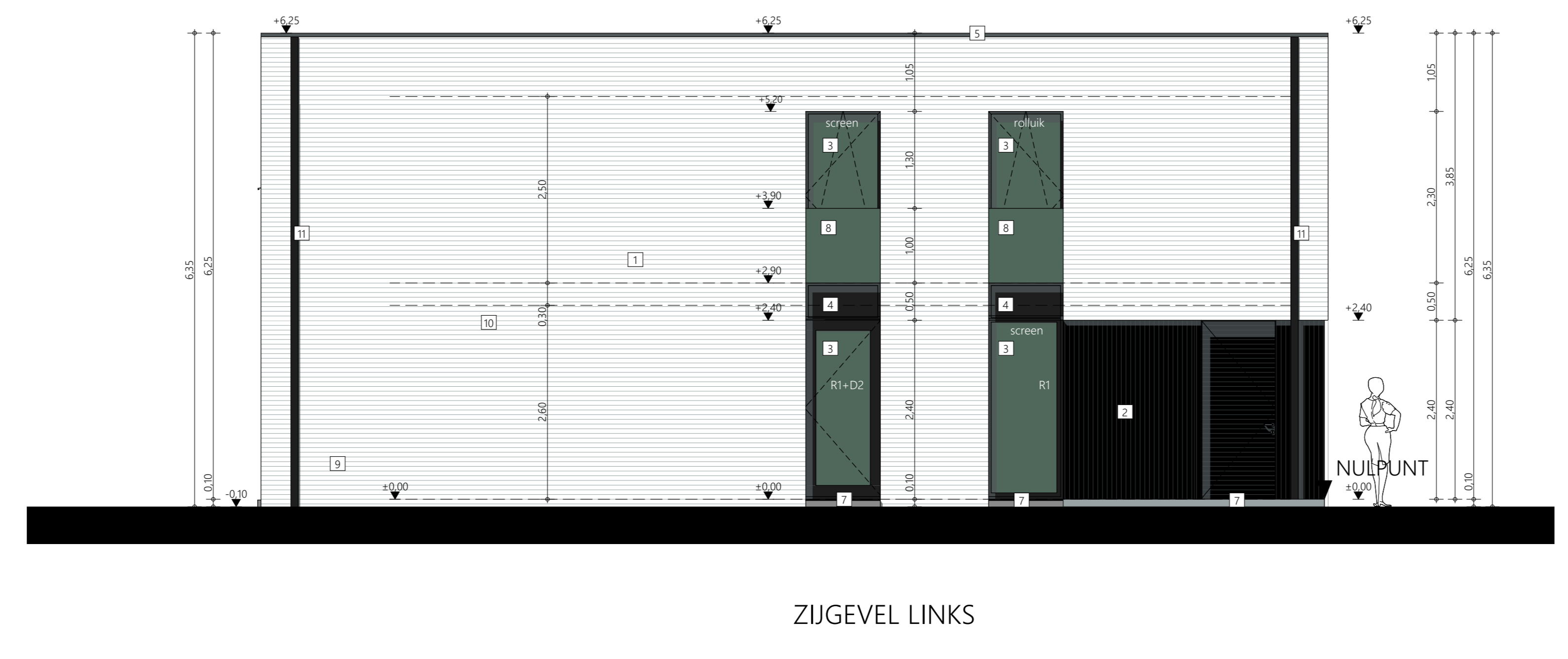
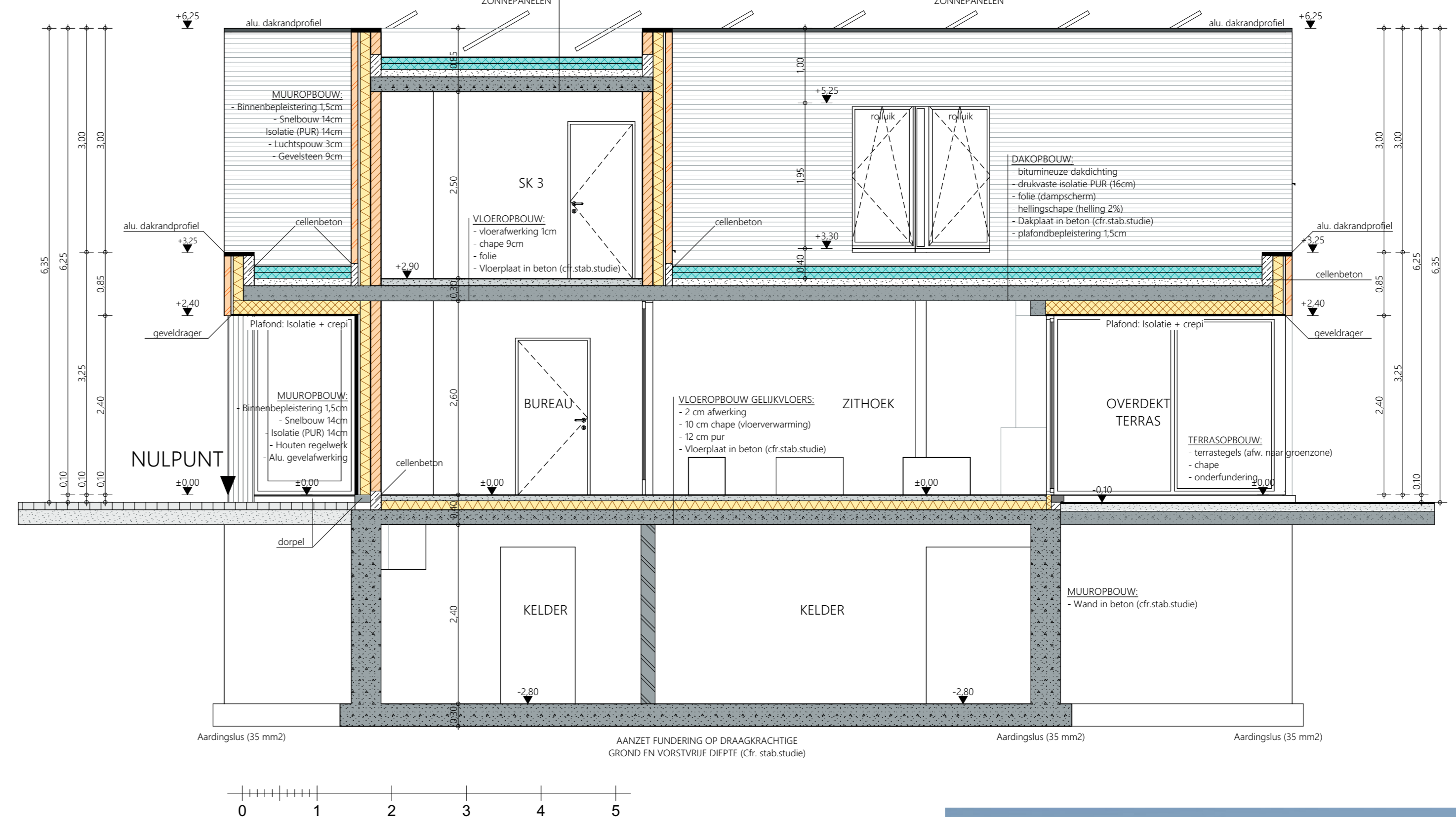
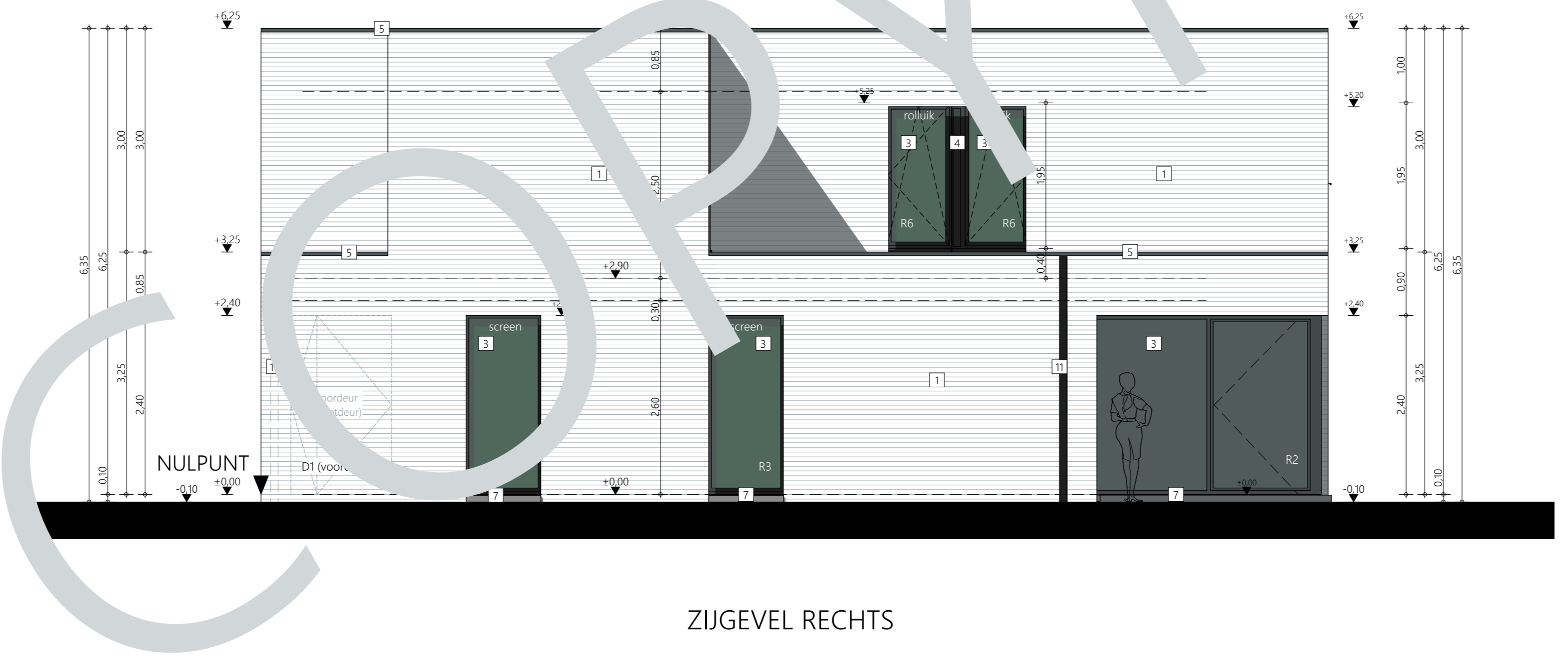
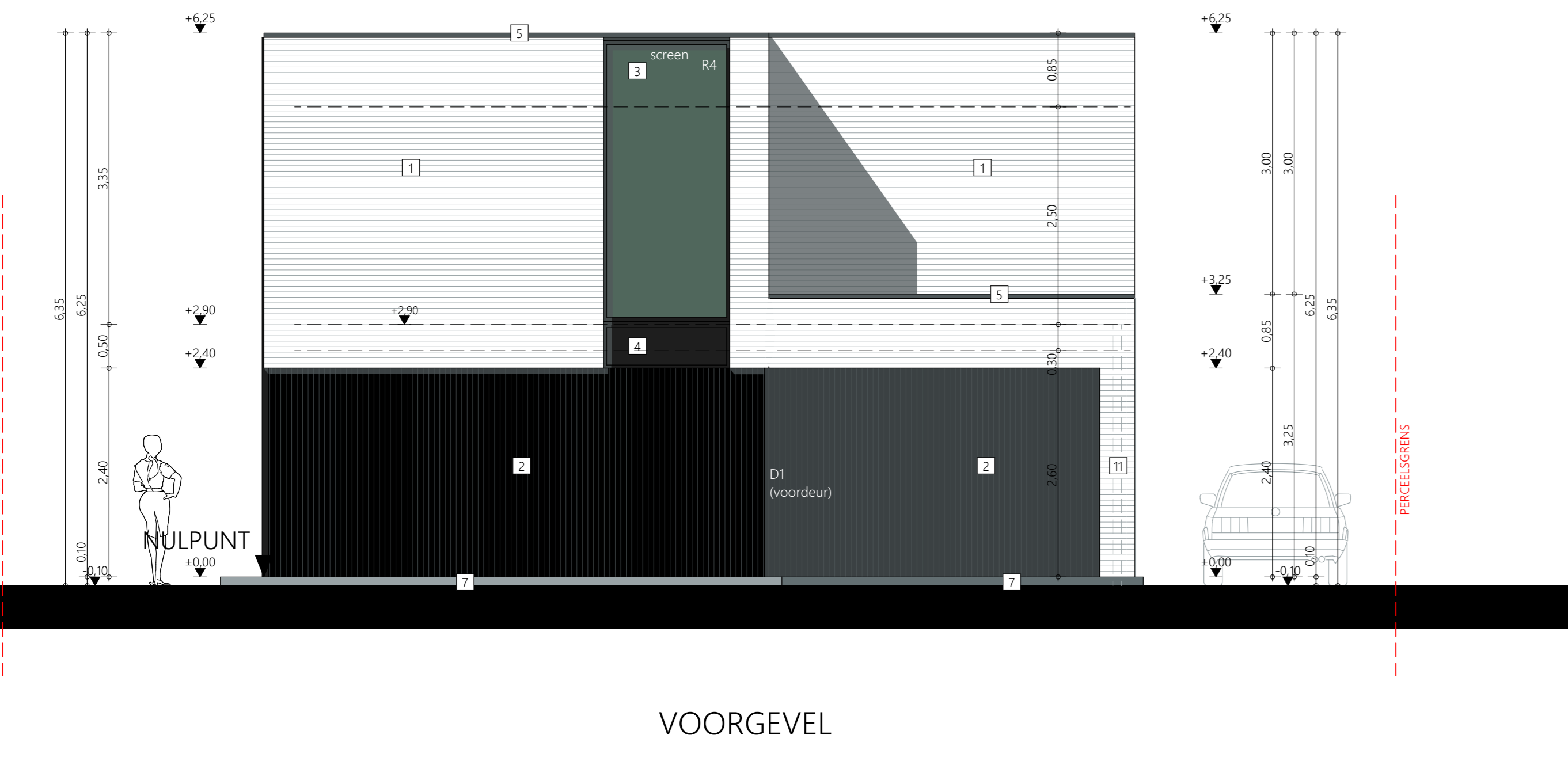
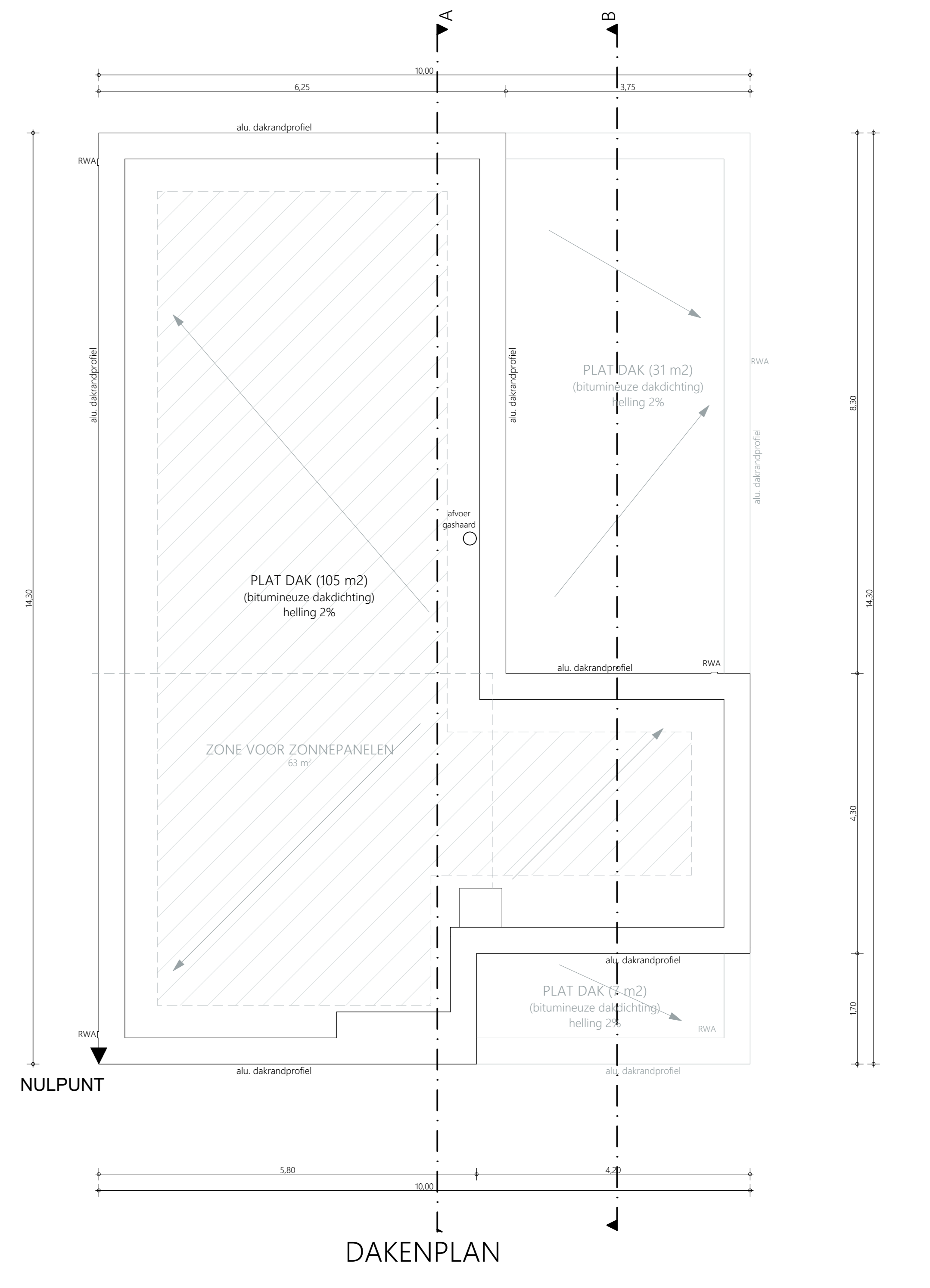
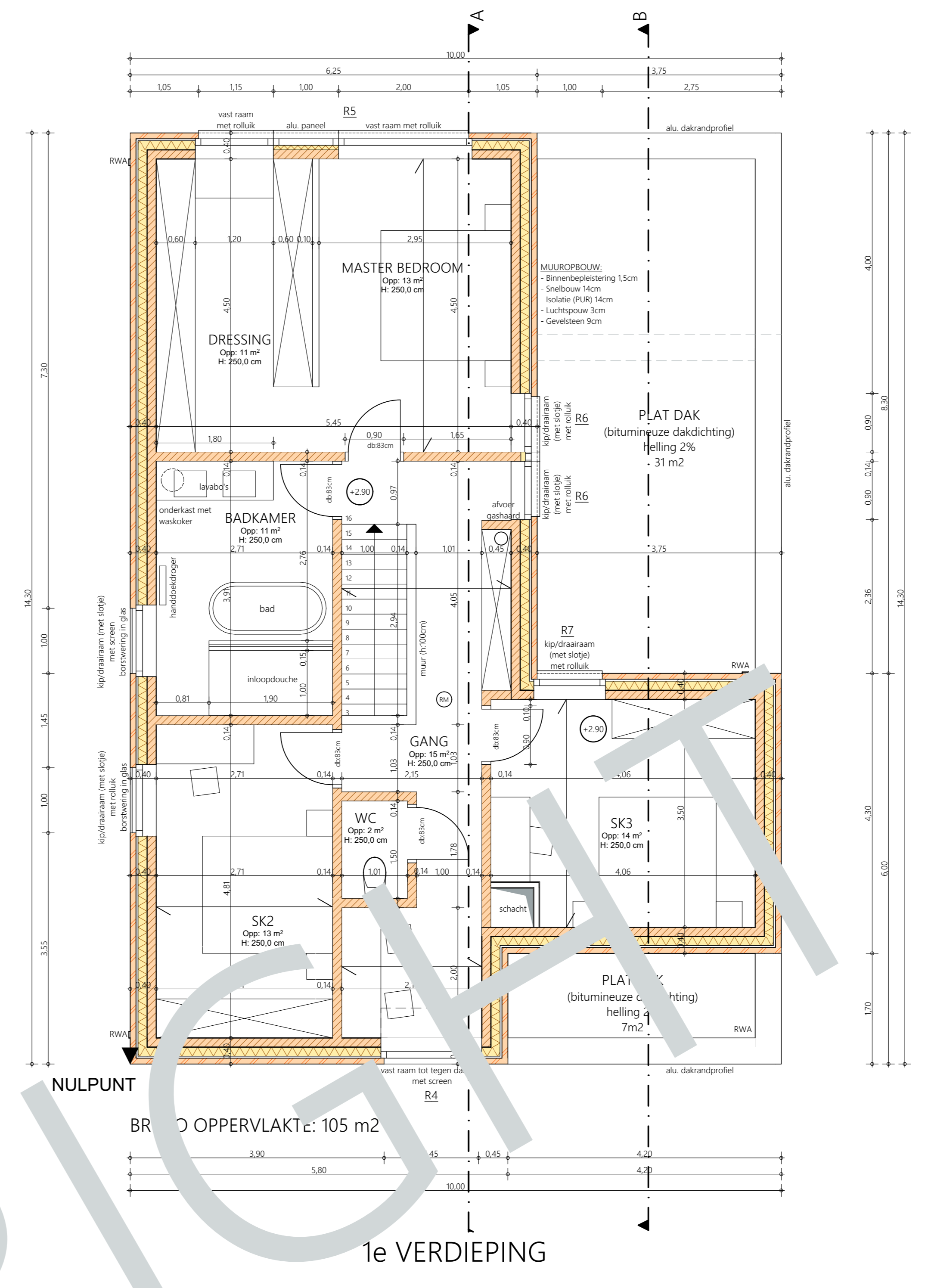
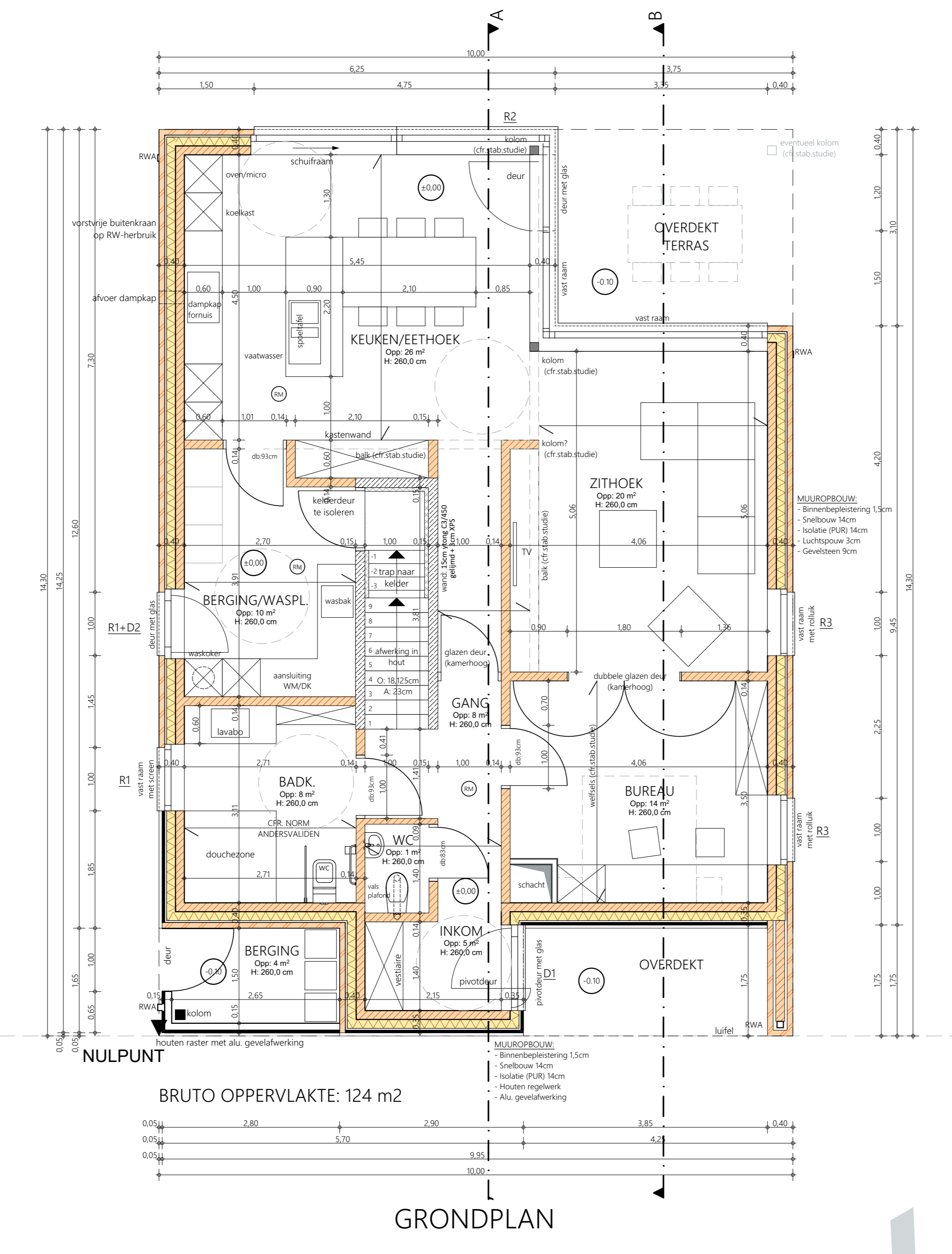
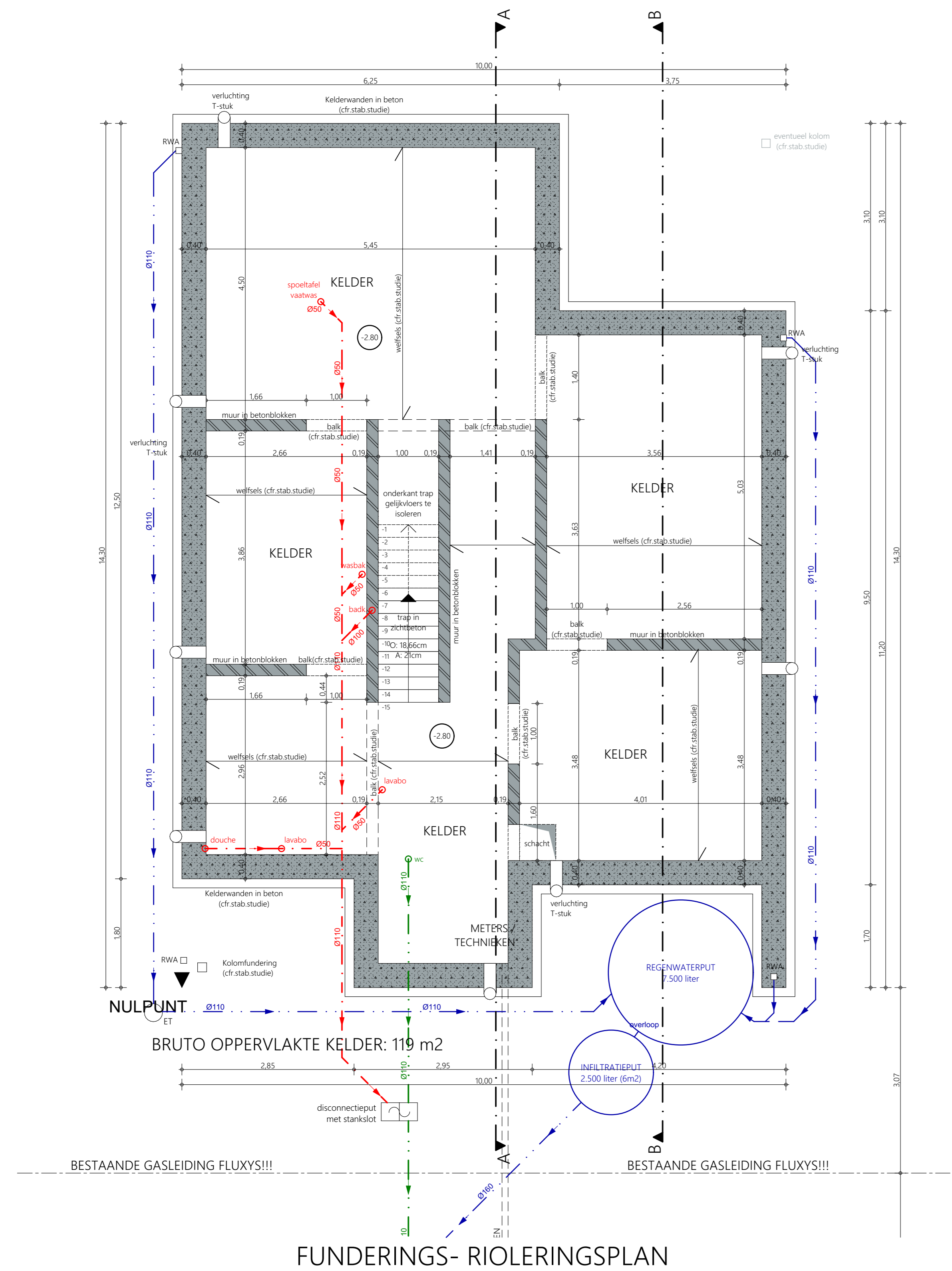


# VOORBEELDPLAN OMGEVINGSVERGUNNING I.O.V. GEYSEN ARCHITECTURE



- LEGENDE GEVELMATERIALEN:**
1. GEVELSTEEN (LICHT GRIS GETINT)
  2. ALU. GEVELAFWERKING (ZWART)
  3. ALU. BUITENROKORNSIEM (ZWART)
  4. ALU. PANNEEL (ZWART)
  5. ALU. DAKRANDPROFIEL (ZWART)
  6. ALU. RAAMDORPEL (ZWART)
  7. DORPEL IN BLAUWE HARDSTEEN
  8. ROOSTERING IN GLAS
  9. VORSTRIE BUITENRAAN OP RW-HERBRUIK
  10. AFVORER DAMPKAP
  11. REGENWATERAFVOER IN GEVELLAK - RONDE BUS MET ALU. AFDEKKAP (ZINK, ZWART)

